

## Silver City Area (San Lorenzo to the Burro Mountains)

### Generalized Geologic Column

PERIOD	Map	FORMATION	Description
Quaternary	Qa	Alluvium	Unconsolidated gravel, sand, and silt on valley floors and along streams.
Tertiary (Pliocene)	QTg	Gila Conglomerate	Poorly to well cemented deposits ranging from sand to gravels. Occasional interbedded basalt flows. Deposited in faulted grabens. Rare mammal fossils (mostly teeth). 0-1000 feet thick.
Tertiary	Tual, Tlrp, Tla  TKav, TKi, Ti	Volcanic rocks  Intrusive Igneous rocks	Ash-fall deposits and lava flows with a wide-range of composition. In some cases interbedded volcanic sandstone and gravels. 0-3000 feet thick.  Igneous rocks that intruded and metamorphosed the surrounding sedimentary rocks. Stocks carried significant mineralization.
Cretaceous	Kmb	Colorado Shale	Dark green, brown, and black shale. Some sandstone layers. Ammonite fossils may be found. Up to 1000 feet thick.
Cretaceous		Beartooth Quartzite	White to grey sandstone. Occasional beds of conglomerate. Cross-beds and ripple marks common. 150 feet thick.
~~~~~ UNCONFORMITY ~~~~~			
Permian	PP	Abo Formation	Red shale and mudstone. Absent in most of the Silver City Area, it is present only northeast of the Central mining district.
Pennsylvanian		Magdalena Limestone	Gray, crinoidal limestone and mudstone with chert bands. In the mining district the Magdalena Formation is subdivided into the Syrena and Oswaldo Formations. Fusulinids are abundant. The Syrena is absent in Silver City and the Oswaldo is 175 feet thick. Fusulinids are abundant.
Mississippian	MD	Lake Valley Limestone	Gray limestone, crinoidal, upper part is massive, lower part includes some shale beds. Chert is present throughout. In addition to crinoids, fossils include brachiopods, corals and bryozoa. 300-400 feet thick.
Devonian		Percha Shale	Shale, the lower part is black and contains very few fossils. The upper part is gray and has abundant limestone nodules and thin beds of limestone. Fossils in the upper Percha include abundant brachiopods, and occasional horn corals and snails.
Silurian	SOC	Fusselman Dolomite	Gray dolomite. Vugs and chert very common. Where present fossils include: Brachiopods, horn corals and gastropods. 100 feet thick.
Ordovician		Montoya Formation	Light gray to gray, finely crystalline dolomite. Banded chert in the middle part. The lowermost 20-30 feet is sandstone. Rare fossils. 300-350 feet thick.
Ordovician		El Paso Formation	Medium gray to gray brown dolomite and sandy dolomite, containing chert. 350-500 feet thick. Gastropods, cephalopods and less abundant brachiopods, sponges, and trilobites. 300 - 500 feet thick.
Cambrian		Bliss Formation	Red brown and gray sandstone, conglomeratic and arkosic in places. Cross-beds abundant. Rare brachiopod fossils. 150 - 200 feet thick.
~~~~~ UNCONFORMITY ~~~~~			
Precambrian	Yg	Burro Mountain Granite	Medium to coarse-grained granite. Includes fragments of Precambrian metamorphic rocks in the Silver City Range.
Precambrian	Xm	Metasedimentary Rocks.	Greenstone at San Lorenzo. In Silver City and Burro Mountains includes metamorphosed sedimentary and metamorphic rocks.

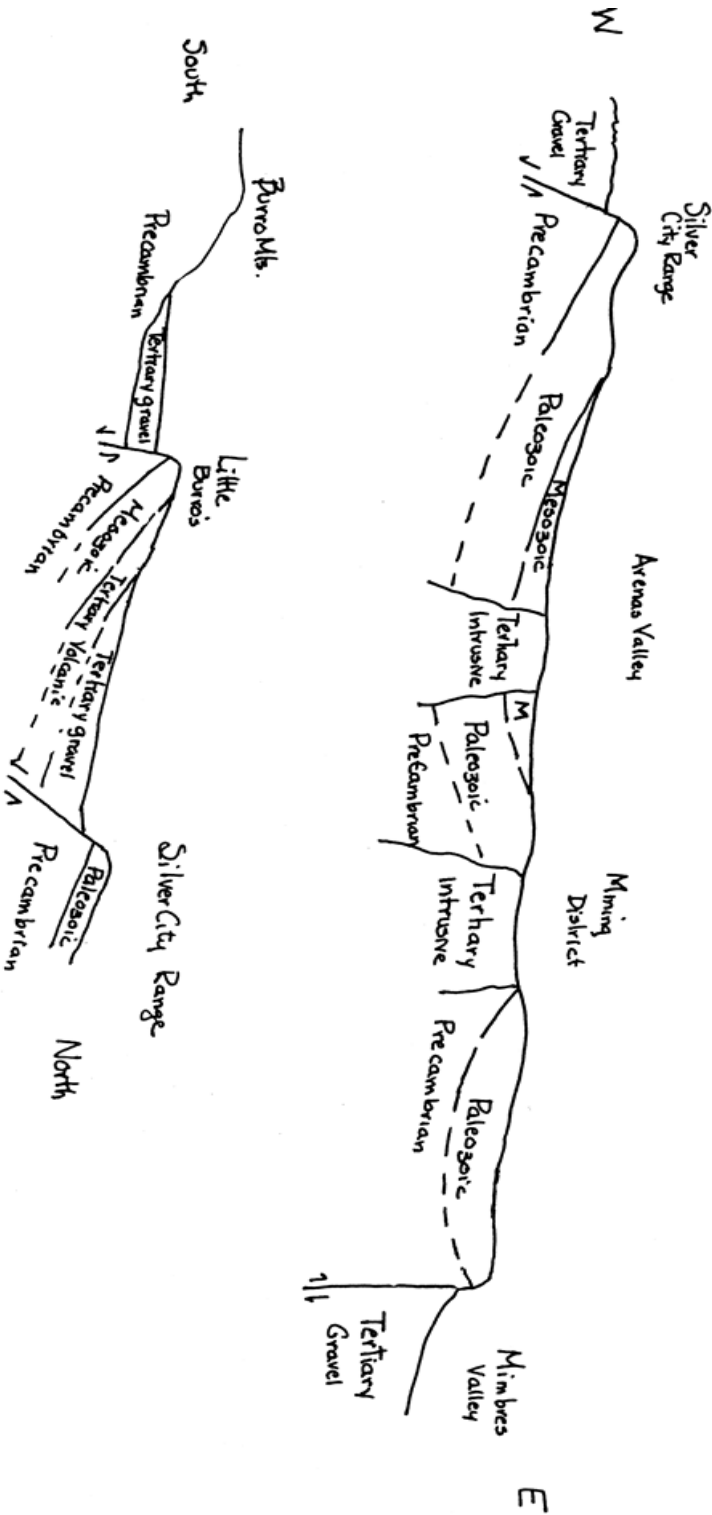
References:

- Cunningham, J. E., 1974, Geologic maps and sections of Silver City Quadrangle, New Mexico: NM Bureau of Mines and Mineral Resources, GM-30.
- Jones, W. R., Herson, R. M., and Moore, S. L., 1967, General geology of Santa Rita Quadrangle: USGS Professional Paper 555, 144 p.
- Guidebooks of the New Mexico Geologic Society

# Silver City Area (San Lorenzo to the Burro Mountains)

## Schematic Cross Sections

Not to scale  
Many faults omitted



## Geologic Map Mimbres to Mangas

From: Geologic Map of New Mexico  
See column for key to symbols

